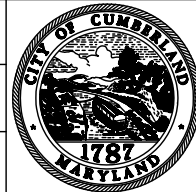


FIRST FLOOR PLAN

These floor plans were traced from proposed renovation plans for this building, which are filed as drawing number C1604 in the records of the Engineering Department; and may not represent as-built conditions. All dimensions shown are nominal. Where dimensions were not used on the renovation plans, scaled dimensions were used.

NOTES

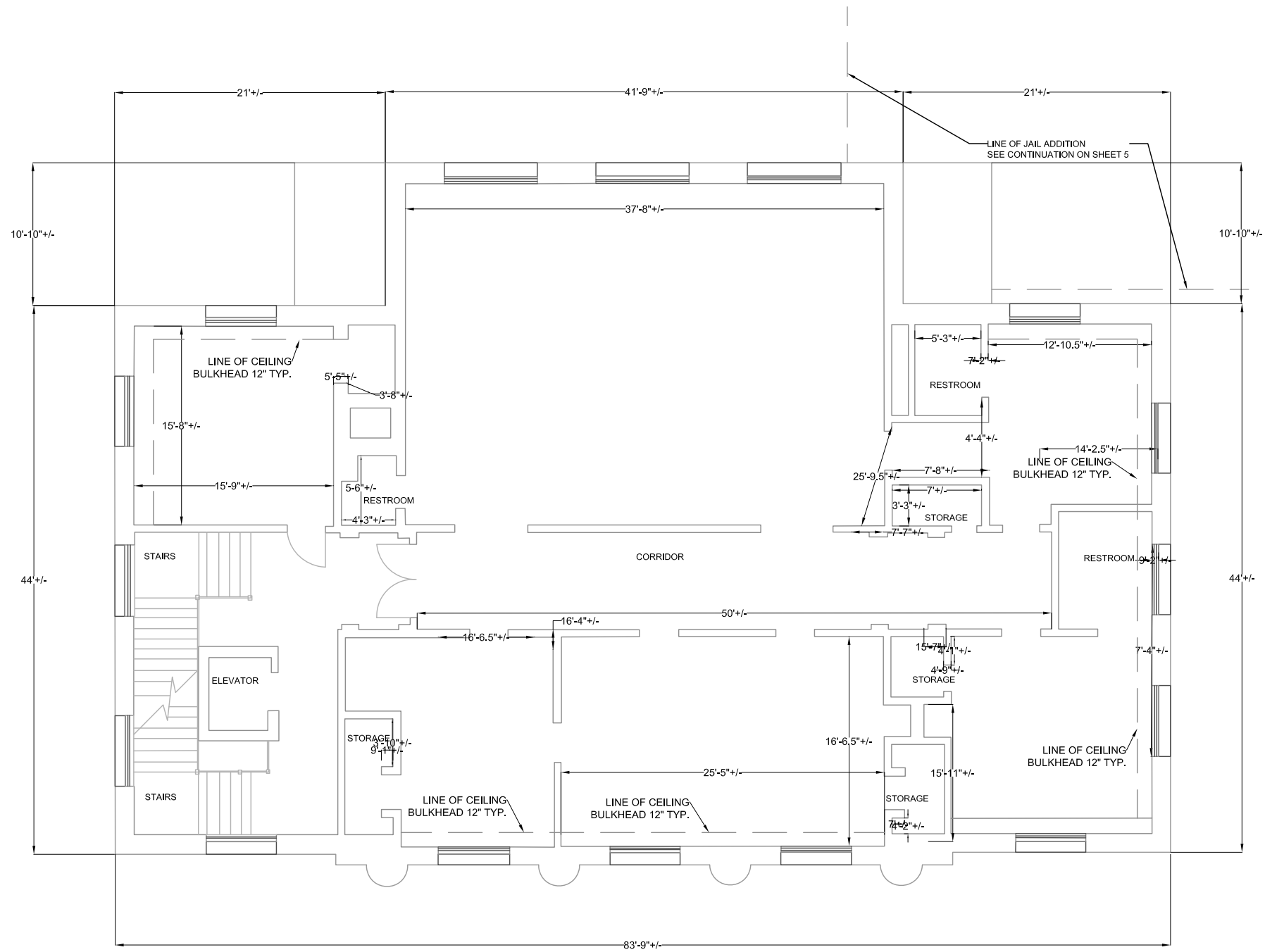
SURVEYED BY:
 DRAWN BY: SAS
 CHECKED BY: JRD



CITY OF
CUMBERLAND,
MARYLAND

TITLE
FLOOR PLANS OF
19 FREDERICK ST

DATE	DRAWING NO.
3/28/11	C2437
SCALE	SHEET NO.
3/32" = 1'	<u>2</u> of <u>6</u>

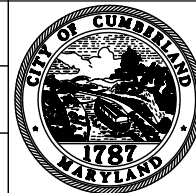


SECOND FLOOR PLAN

These floor plans were traced from proposed renovation plans for this building, which are filed as drawing number C1604 in the records of the Engineering Department; and may not represent as-built conditions. All dimensions shown are nominal. Where dimensions were not used on the renovation plans, scaled dimensions were used.

NOTES

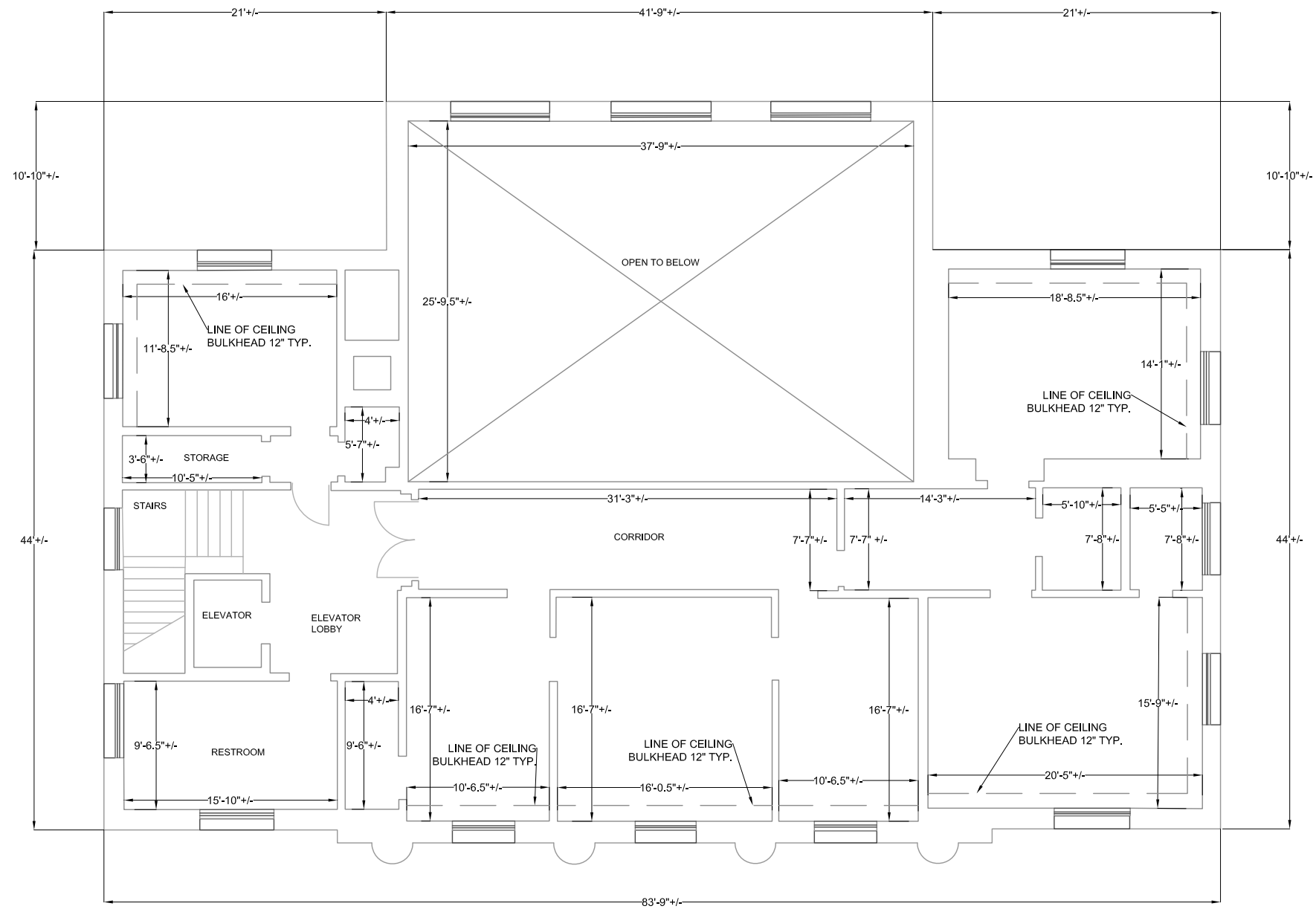
SURVEYED BY:
DRAWN BY: SAS
CHECKED BY: JRD



**CITY OF
CUMBERLAND,
MARYLAND**

TITLE
**FLOOR PLANS OF
19 FREDERICK ST**

DATE	DRAWING NO.
3/28/11	C2437
SCALE	SHEET NO.
3/32" = 1'	3 of 6

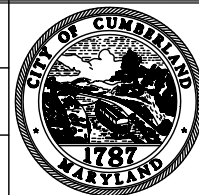


THIRD FLOOR PLAN

These floor plans were traced from proposed renovation plans for this building, which are filed as drawing number C1604 in the records of the Engineering Department; and may not represent as-built conditions. All dimensions shown are nominal. Where dimensions were not used on the renovation plans, scaled dimensions were used.

NOTES

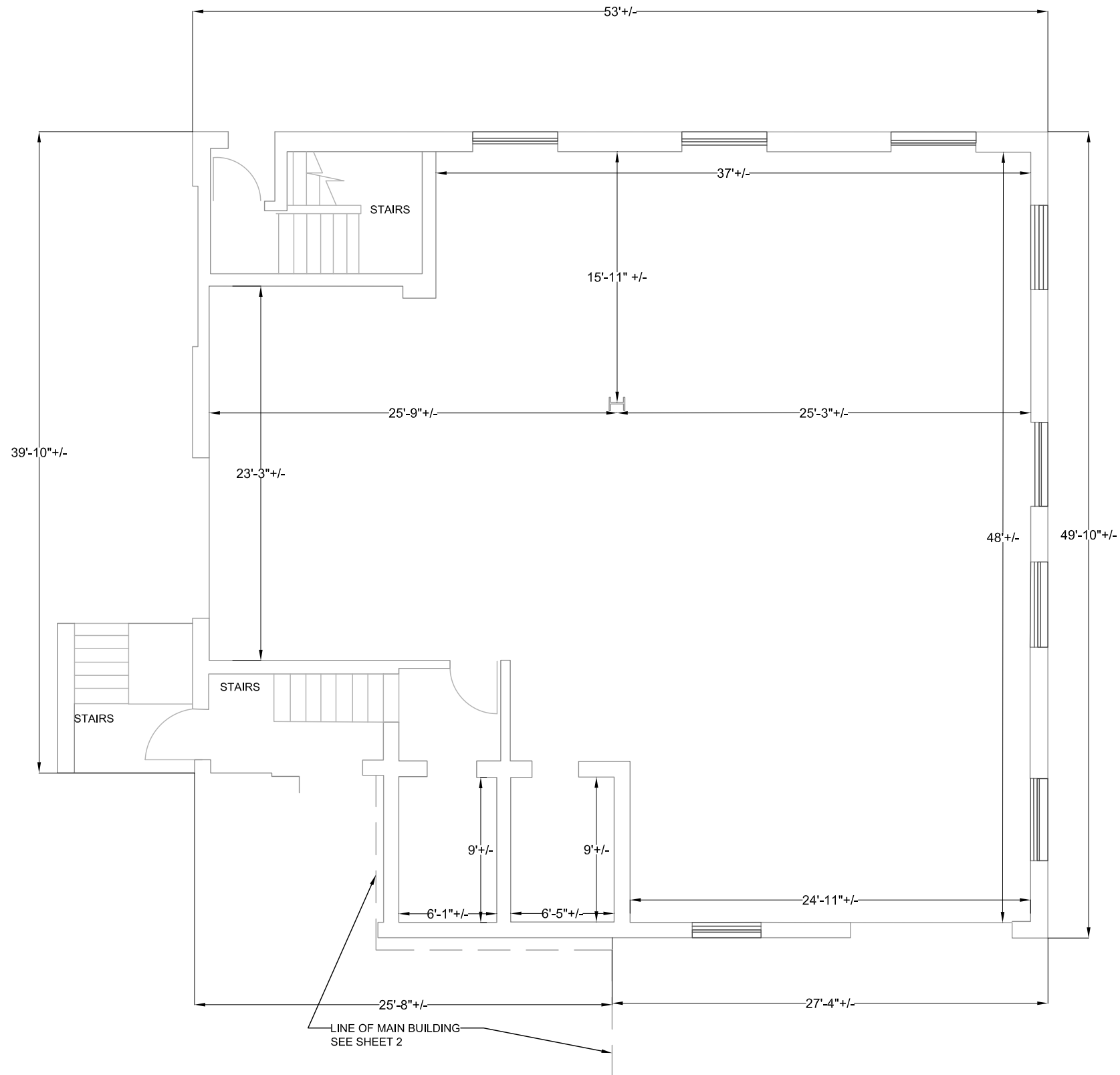
SURVEYED BY:
DRAWN BY: SAS
CHECKED BY: JRD



CITY OF
CUMBERLAND,
MARYLAND

TITLE
FLOOR PLANS OF
19 FREDERICK ST

DATE	DRAWING NO.
3/28/11	C2437
SCALE	SHEET NO.
3/32" = 1'	4 of 6

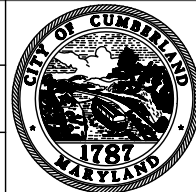


ADDITION LOWER LEVEL FLOOR PLAN

These floor plans were traced from proposed renovation plans for this building, which are filed as drawing number C1605 in the records of the Engineering Department; and may not represent as-built conditions. All dimensions shown are nominal. Where dimensions were not used on the renovation plans, scaled dimensions were used.

NOTES

SURVEYED BY:
DRAWN BY: SAS
CHECKED BY: JRD



CITY OF
CUMBERLAND,
MARYLAND

TITLE

FLOOR PLANS OF
19 FREDERICK ST

DATE

3/28/11

SCALE

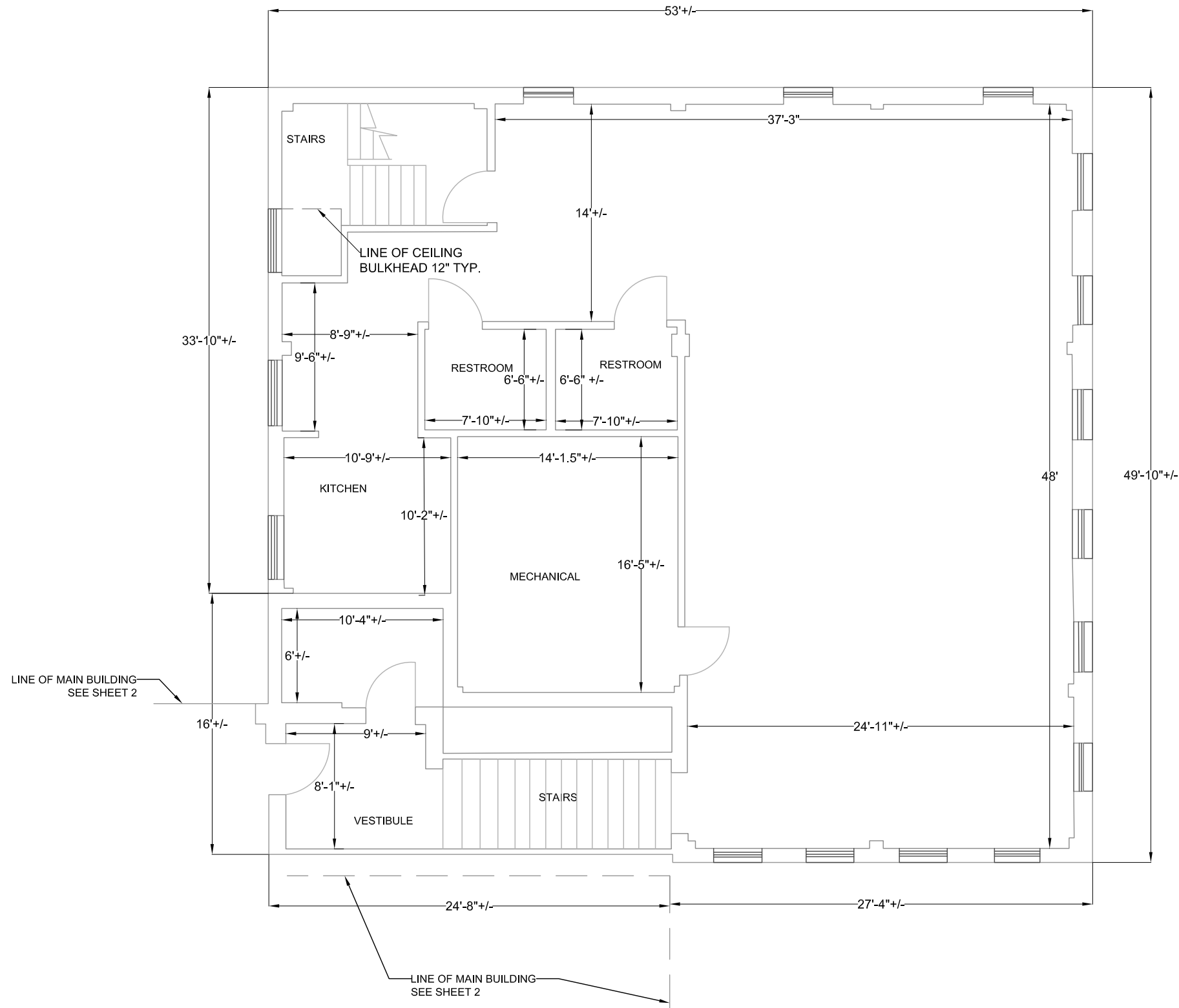
1/8" = 1'

DRAWING NO.

C2437

SHEET NO.

5 of 6



ADDITION UPPER LEVEL FLOOR PLAN

These floor plans were traced from proposed renovation plans for this building, which are filed as drawing number C1605 in the records of the Engineering Department; and may not represent as-built conditions. All dimensions shown are nominal. Where dimensions were not used on the renovation plans, scaled dimensions were used.

NOTES

SURVEYED BY:
DRAWN BY: SAS
CHECKED BY: JRD



**CITY OF
CUMBERLAND,
MARYLAND**

TITLE	DATE	DRAWING NO.
FLOOR PLANS OF 19 FREDERICK ST	3/28/11	C2437
	SCALE	SHEET NO.
	1/8" = 1'	<u>6</u> of <u>6</u>